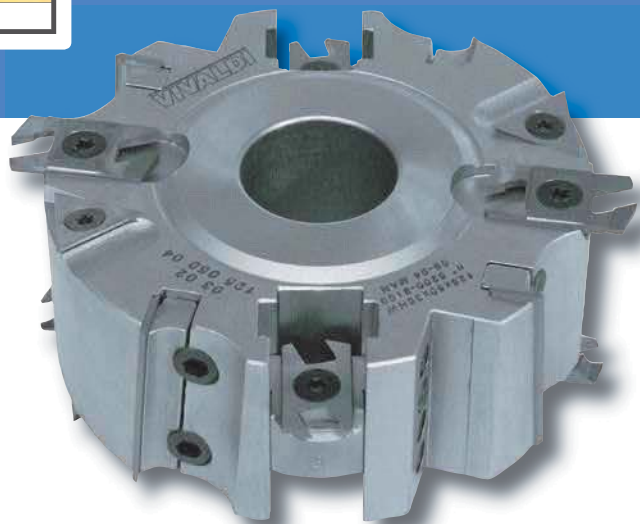


Art. 03 03



**FRESA PER BATTUTE
MULTIUSO**



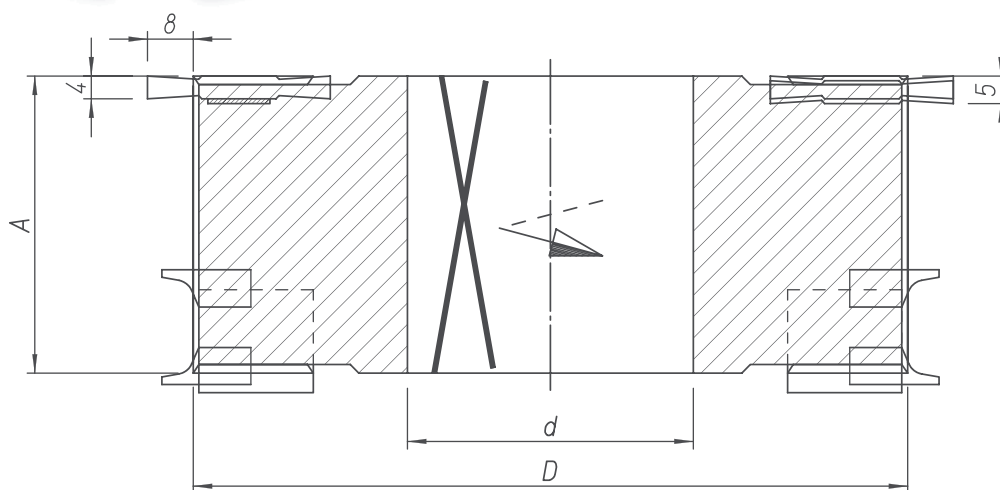
**REBATING CUTTERS,
MULTIPURPOSE**



**PORTE-OUTILS A FEUILLURER
MULTI-USAGES**



**FALZMESSERKÖPFE FÜR
MEHRFACHANWENDUNG**



| Cod. | D | A | d | B | B1 | B2 | Z | V | RPM max |
|------------|-----|----|-------|-------|-------|----|---|---|---------|
| 125 060 04 | 125 | 61 | 30→50 | 17÷64 | 22÷64 | 64 | 4 | 4 | 9100 |
| 125 080 04 | 125 | 81 | 30→50 | 17÷84 | 22÷84 | 84 | 4 | 4 | 9100 |
| 140 060 04 | 140 | 61 | 30→50 | 17÷64 | 22÷64 | 64 | 4 | 4 | 7700 |
| 140 080 04 | 140 | 81 | 30→50 | 17÷84 | 22÷84 | 84 | 4 | 4 | 7700 |

Ricambi-Spare Parts

| Descrizione-Description | Dimensione-Dimension | Codice-Code |
|-------------------------|----------------------|--------------|
| Coltello-Knive | 60x12x1,5 | I10.11 |
| Tassello-Wedge | 56,8 (Dx-Sx) | I10.11/T |
| Coltello-Knive | 80x12x1,5 | I10.12 |
| Tassello-Wedge | 76,8 (Dx-Sx) | I10.12/T |
| Incisore-Spurs | 22x22x2 | I15.15 |
| Sincron | - | I41.50D |
| Settore | 4mm | I34.CE4HW |
| Vite-Screw | M5x12,5 | V14.5/12.5CT |
| Vite-Screw | M6x14,5 | V14.6/14.5CT |
| Vite-Screw | M7x24 | V13.7/24.6CE |
| Vite-Screw | M8x12 | V1.8/12CEPC |

Inserti a scelta - Insert to choose

| Descrizione-Description | Dimensione-Dimension | Codice-Code Dx-RH | Codice-Code Sx-LH |
|-------------------------|----------------------|-------------------|-------------------|
| Raggiatori-Radiusing | R 2,5 | I40.CE25D615 | I40.CE25S615 |
| | R 3 | I40.CE30D615 | I40.CE30S615 |
| | R 3,5 | I40.CE35D615 | I40.CE35S615 |
| | R 4 | I40.CE40D615 | I40.CE40S615 |
| Spigolatore-Chamfering | 45° | I40.CE45D645 | I40.CE45S645 |

VIVALDI

L'utensile viene fornito con tutti gli inserti necessari a realizzare le lavorazioni rappresentate
Tool realises all solutions indicated

ESEMPI DI LAVORAZIONI - EXAMPLES OF WORKING

